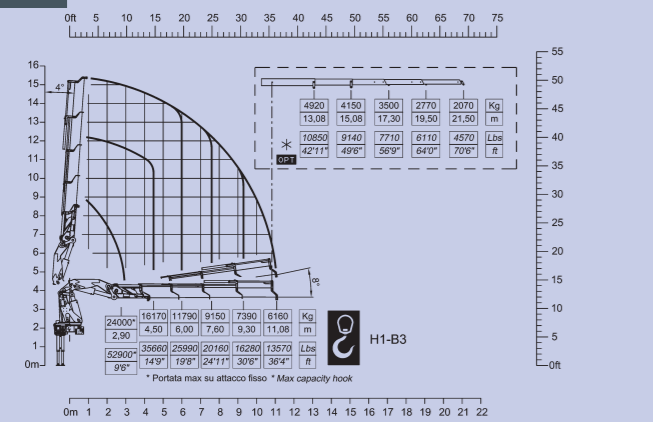
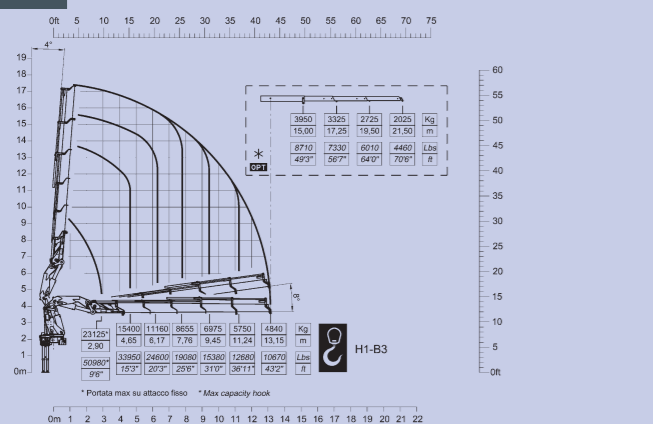


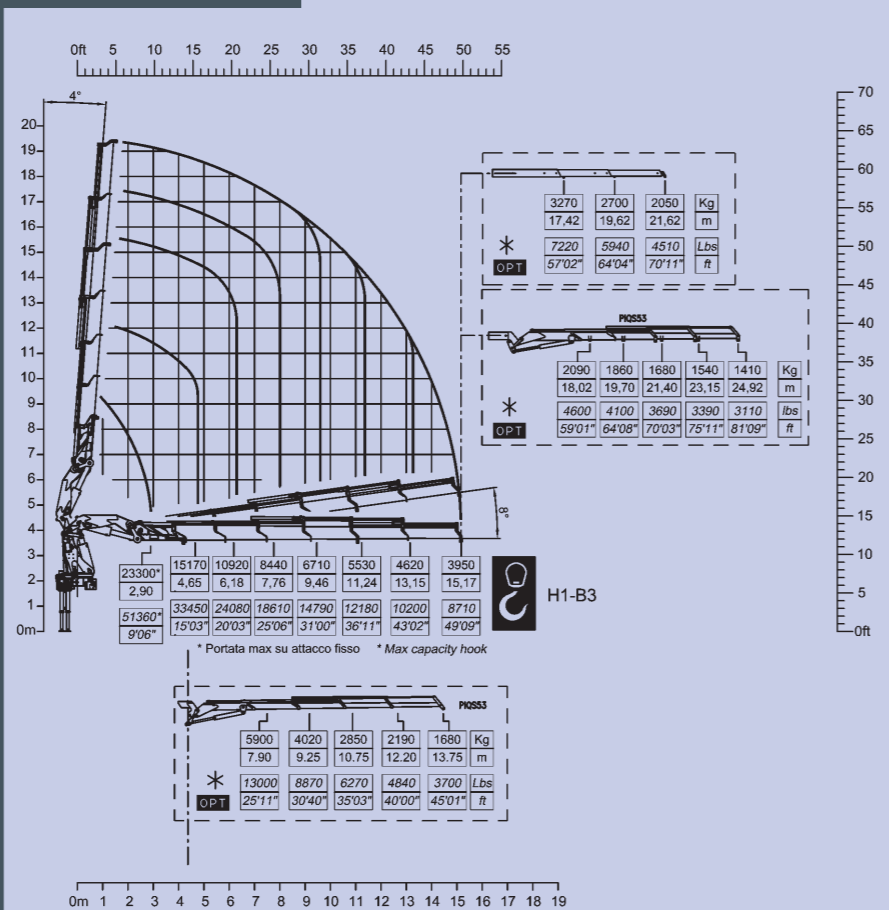
800A.4



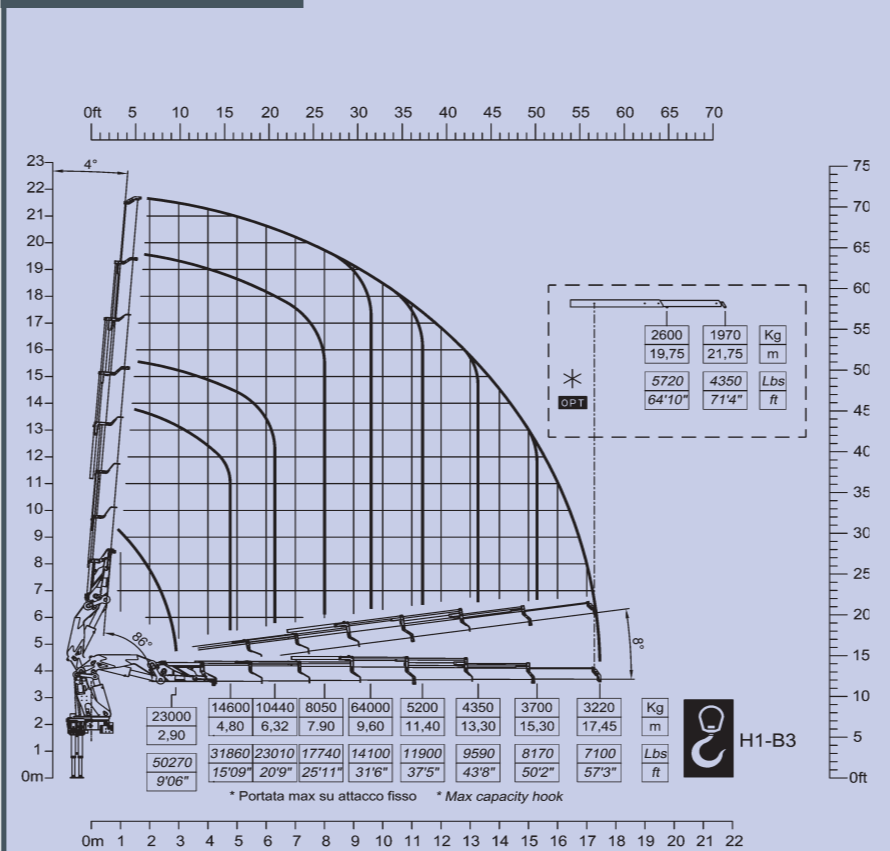
800A.5



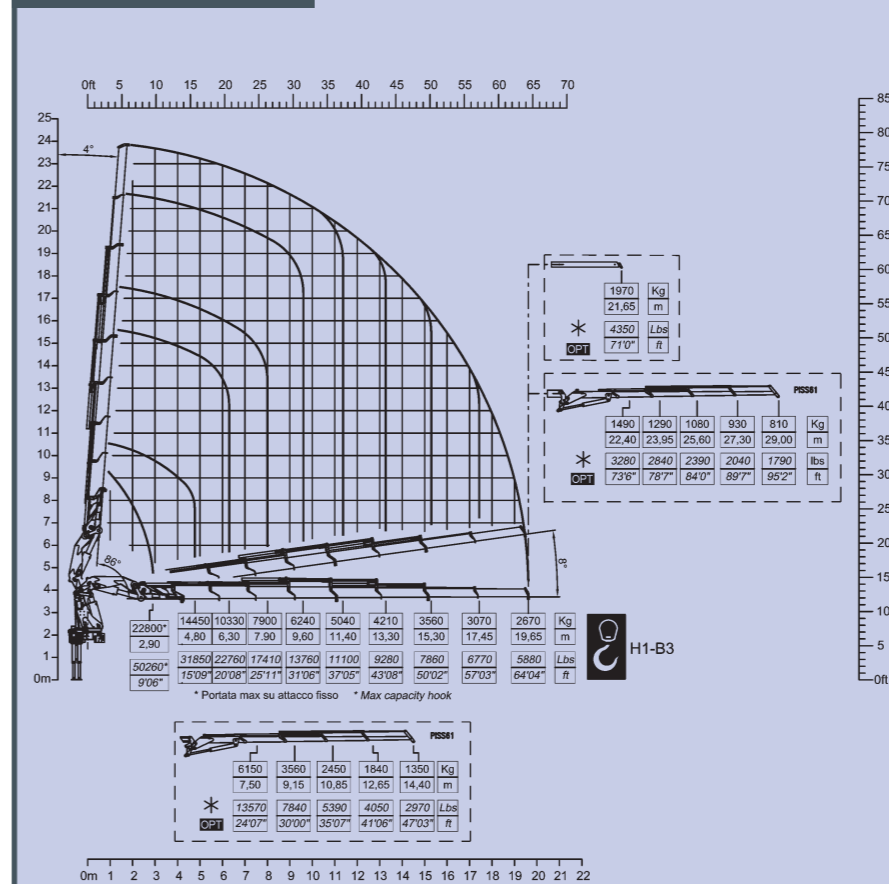
800A.6



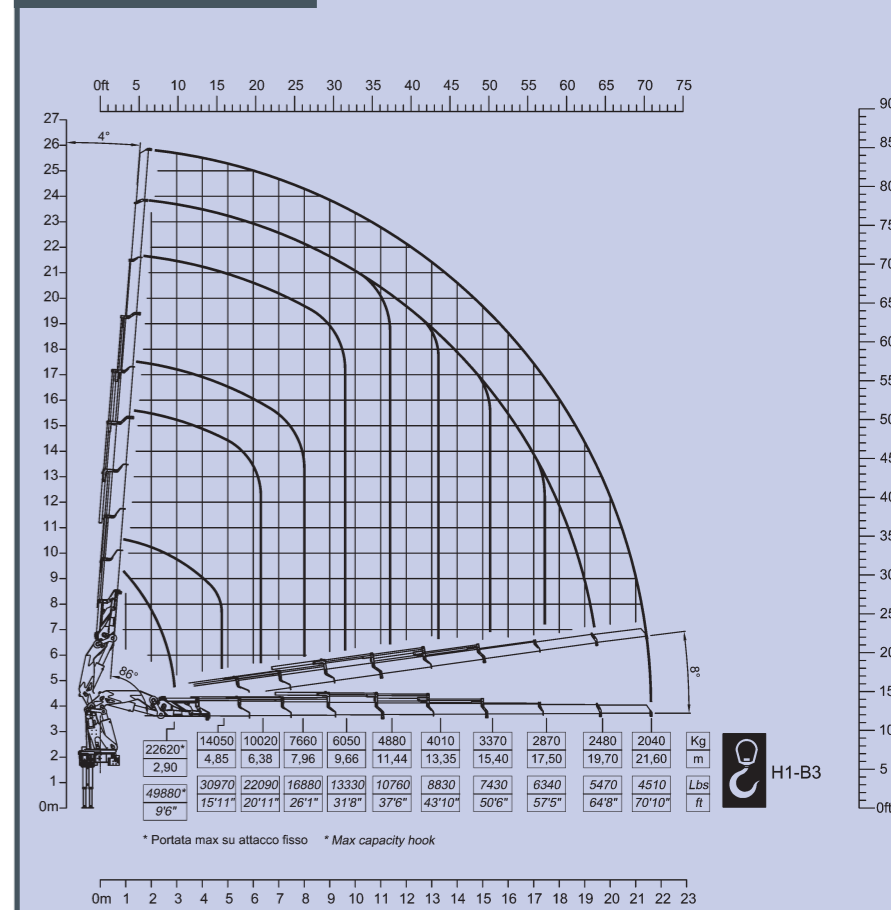
800A.7



800A.8

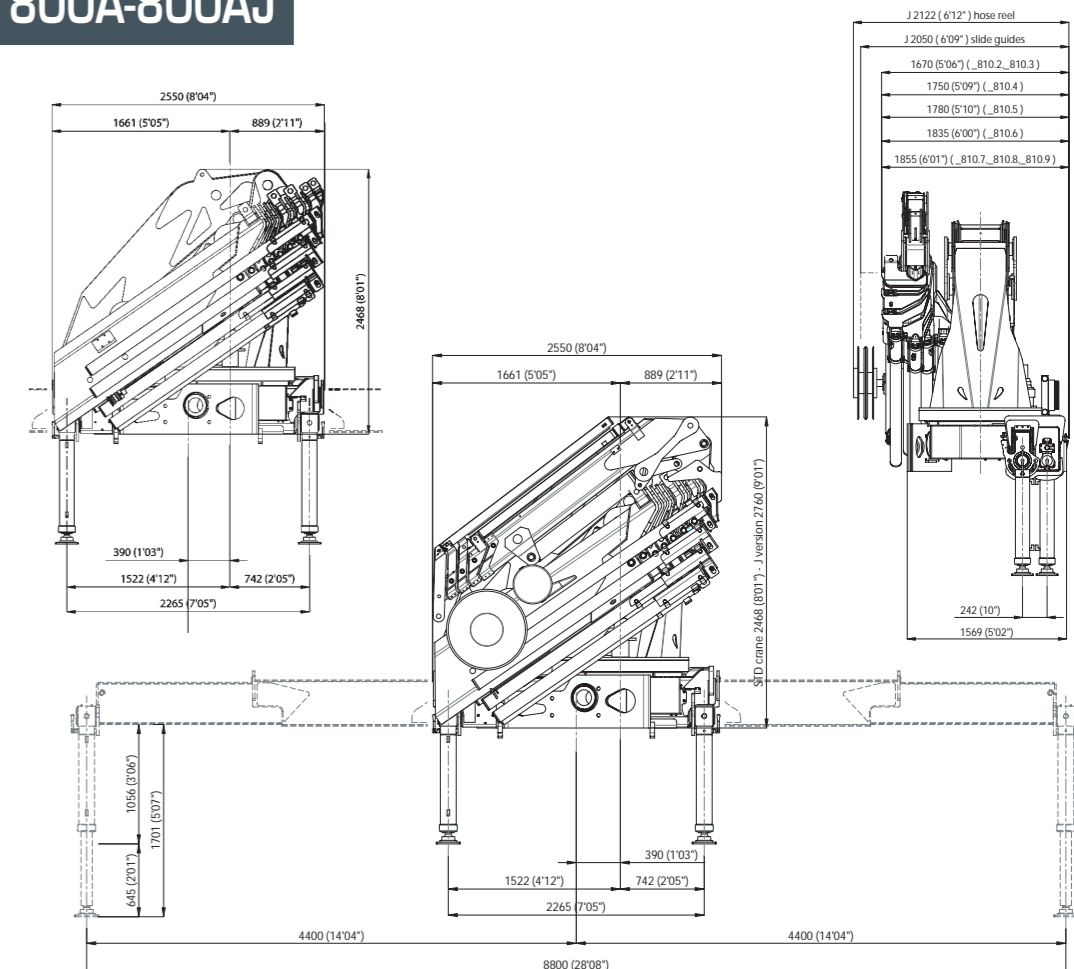


800A.9



I Caratteristiche tecniche	F Caractéristiques techniques	D Technische Eigenschaften	E Datos Técnicos	P Datos Técnicos							GB USA		800A.6		800A.8		800A.9	
					800A.4	800A.5	800A.6 6.J4 6.J6	800A.7	800A.8 8.J4 8.J6	800A.9	Specifications	800A.4 USA	800A.5 USA	800A.6 6.J4 6.J6 USA	800A.8 8.8J4 8.8J6 USA	800A.9 USA		
Momento massimo di sollevamento	Couple de levage	Hubmoment	Momento de elevación	Capacidade máxima de elevação	kNm 727	kNm 716	kNm 705	kNm 700	kNm 693	kNm 681	Lifting moment	lbs.ft 531.735	lbs.ft 517.990	lbs.ft 510.032	lbs.ft 506.415	lbs.ft 501.350	lbs.ft 492.669	
Momento massimo dinamico all'asse colonna	Moment maxi. dynamique à l'axe colonne	Max. dynamisches Moment an der Säulenachse	Momento max. dinamico al eje de la columna	Capacidade máxima dinamica no eixo da coluna	daNm 93043	daNm 93043	daNm 93043	daNm 93043	daNm 93043	daNm 93043	Maximum dynamic moment at column axis	lbs.ft 672.980	lbs.ft 672.980	lbs.ft 672.980	lbs.ft 672.980	lbs.ft 672.980	lbs.ft 672.980	
Tempo di rotazione (360°)	Temps de rotation (360°)	Schwenkungszeit (360°)	Tiempo de giro (360°)	Tempo de rotação (360°)	sec. 60	sec. 60	sec. 60	sec. 60	sec. 60	sec. 60	Time of rotation (360°)	sec. 60	sec. 60	sec. 60	sec. 60	sec. 60	sec. 60	
Coppia massima di rotazione	Couple maxi. de rotation	Max. Schwenkmoment	Potencia máxima de giro	Binário máximo de rotação	daNm 7200	daNm 7200	daNm 7200	daNm 7200	daNm 7200	daNm 7200	Maximum rotation torque	lbs.ft 52078	lbs.ft 52078	lbs.ft 52078	lbs.ft 52078	lbs.ft 52078	lbs.ft 52078	
Velocità di sollevamento (*)	Vitesse de levage (*)	Hubgeschwindigkeit (*)	Velocidad de elevación (*)	Velocidade de elevação (*)	m/min 10,33	m/min 12,2	m/min 14	m/min 16,3	m/min 18	m/min 19,74	Lifting speed (*)	ft/min 33'11"	ft/min 40'0"	ft/min 45'11"	ft/min 52'7"	ft/min 59'1"	ft/min 64'9"	
Numero di sezioni del distributore (gru STD)	Nombre des éléments du distributeur (grue STD)	Zahl der Steuerblocksektionen (Standardkran)	Número de las secciones del distribuidor (grúa STD)	Número dos elementos do distribuidor (grua std.)	4	4	4	4	4	4	Number of distributor section (STD crane)	4	4	4	4	4	4	
Capacità serbatoio olio	Capacité réservoir huile	Fassungsvmögen des Ölbehalters	Capacidad del depósito de aceite	Capacidade do depósito de óleo	l 300	l 300	l 300	l 300	l 300	l 300	Oil tank capacity	gal 79	gal 79	gal 79	gal 79	gal 79	gal 79	
Pressione massima di esercizio (gru CE)	Pression maxi. d'exercice (grue CE)	Max. Betriebsdruck (CE Kran)	Presión máxima de trabajo (grúa CE)	Pressão máxima de trabalho (Grua CE)	bar 315	bar 315	bar 315	bar 315	bar 315	bar 315	Maximum working pressure (CE crane)	psi 4567	psi 4567	psi 4567	psi 4567	psi 4567	psi 4567	
Portata ottimale della pompa	Débit de la pompe	Optimale Fördermenge der Pumpe	Caudal recomendado de la bomba	Capacidade da bomba	l/min 80	l/min 80	l/min 80	l/min 80	l/min 80	l/min 80	Recommended pump delivery	gal/min 21.10	gal/min 21.10	gal/min 21.10	gal/min 21.10	gal/min 21.10	gal/min 21.10	
Potenza massima richiesta	Puissance maxi. demandée	Max. Leistung	Potencia máxima demandada	Potência máxima	kW 50/68	kW 50/68	kW 50/68	kW 50/68	kW 50/68	kW 50/68	Maximum power required	ft.lbs/s 36878	ft.lbs/s 36878	ft.lbs/s 36878	ft.lbs/s 36878	ft.lbs/s 36878	ft.lbs/s 36878	
Tiro massimo verricello (ultimo strato)	Tirage maxi. du treuil (dernière couche)	Max. Zugkraft Seilwinde (letzte Anzahl)	Tiro máximo del cabrestante (última capa)	Força máxima do guincho	daN 3500	daN 3500	daN 3500	daN 3500	daN 3500	daN 3500	Maximum pull of winch (last layer)	lbs 7716	lbs 7716	lbs 7716	lbs 7716	lbs 7716	lbs 7716	
Massa gru standard	Masse grue standard	Masse des Standardkrans	Peso de la grúa standard	Peso da grua standard	Kg 7790	Kg 8085	Kg 8347	Kg 8581	Kg 8810	Kg 8990	Mass of standard crane	lbs 17138	lbs 177887	lbs 18363	lbs 18878	lbs 193882	lbs 19778	
Massa jib J4 jib J6	Masse jib J4 jib J6	Masse jib J4 jib J6	Peso de jib J4 jib J6	Peso de jib J4 jib J6			Kg 1250 Kg 1400		Kg 1250 Kg 1400		Mass jib J4 jib J6	lbs 2750 lbs 3080		lbs 2750 lbs 3080				
Prolunghe meccaniche	Rallonges manuelles	Mechanische Verlängerungen	Prolongas mecánicas	Prolongas mecánicas							Manual extensions							

800A-800AJ



I dati e le descrizioni del presente catalogo sono forniti a titolo indicativo e non sono vincolanti. COPMA 2000 si riserva il diritto di modificarli senza alcun avviso.
Technical features are not binding. COPMA 2000 reserves itself the right to any modification without notice.

*E' considerato lo braccio massimo della gru base / *Avec un extension maxi. de la grue de base / *Es handelt sich um die max. Ausladung des Standardkrans / *Se considera el alcance max. de la grúa std / *Se considera el alcance max. de la grúa std / *The maximum range of the basic crane is considered